

Bellevue Lake to Lake Trail: Analysis and Recommendations

CEP 498: Planning Studio

December 9, 2019



Team Members

Hannah Wetter: hjw96@uw.edu

Emily Forsberg: emilydf@uw.edu

Colton Brailsford: coltonb@uw.edu

Cameron Miller: sidmil@uw.edu

Yaly Aguilera:
issamar.aguilera.larch@gmail.com

Project Background

Objectives of CEP 498

- Studio class focused on urban planning issues
- Team of 5 students, analyzing the Lake to Lake Trail as it currently exists, beginning at Meydenbauer Bay park, extending slightly past I-405

Our Assignment from the City

- We have been working with the City of Bellevue to assess the Lake to Lake Trail.
- Our analysis has covered topics from the history of Bellevue to the importance of wayfinding and programming.
- Through this presentation, we hope to show you what we have learned about the trail itself and in what directions to go to improve the trail and its image.

Table of Contents

Background and History of Bellevue - 6

Vision and Current State of the Lake to Lake Trail - 11

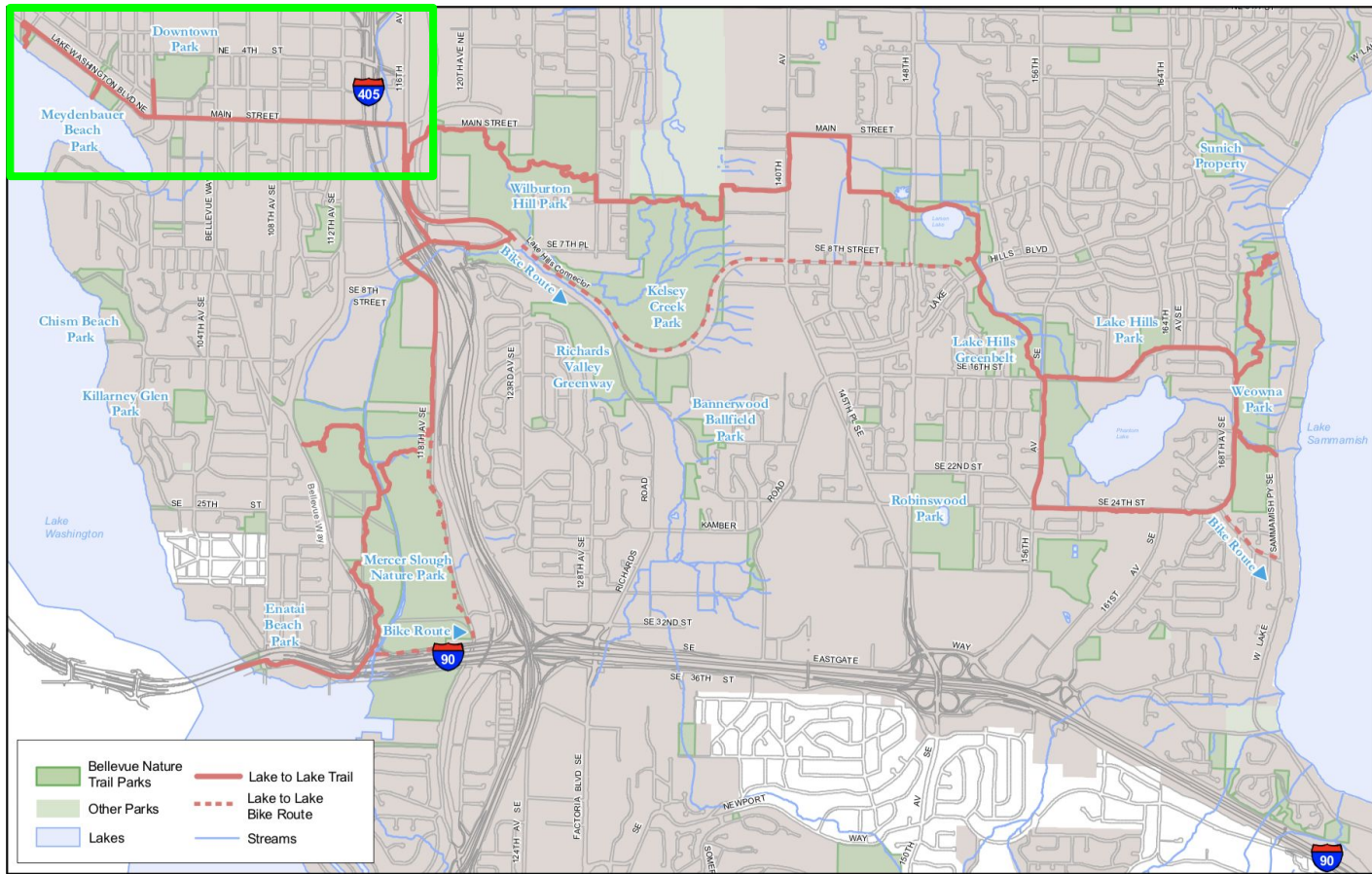
Case Studies of Notable Trails - 21

Demographics - 24

Trail Usage - 28

Wayfinding and Aesthetics - 36

Programming - 51



= 0.5 miles

Lake to Lake Trail Network

Background and History of the City of Bellevue

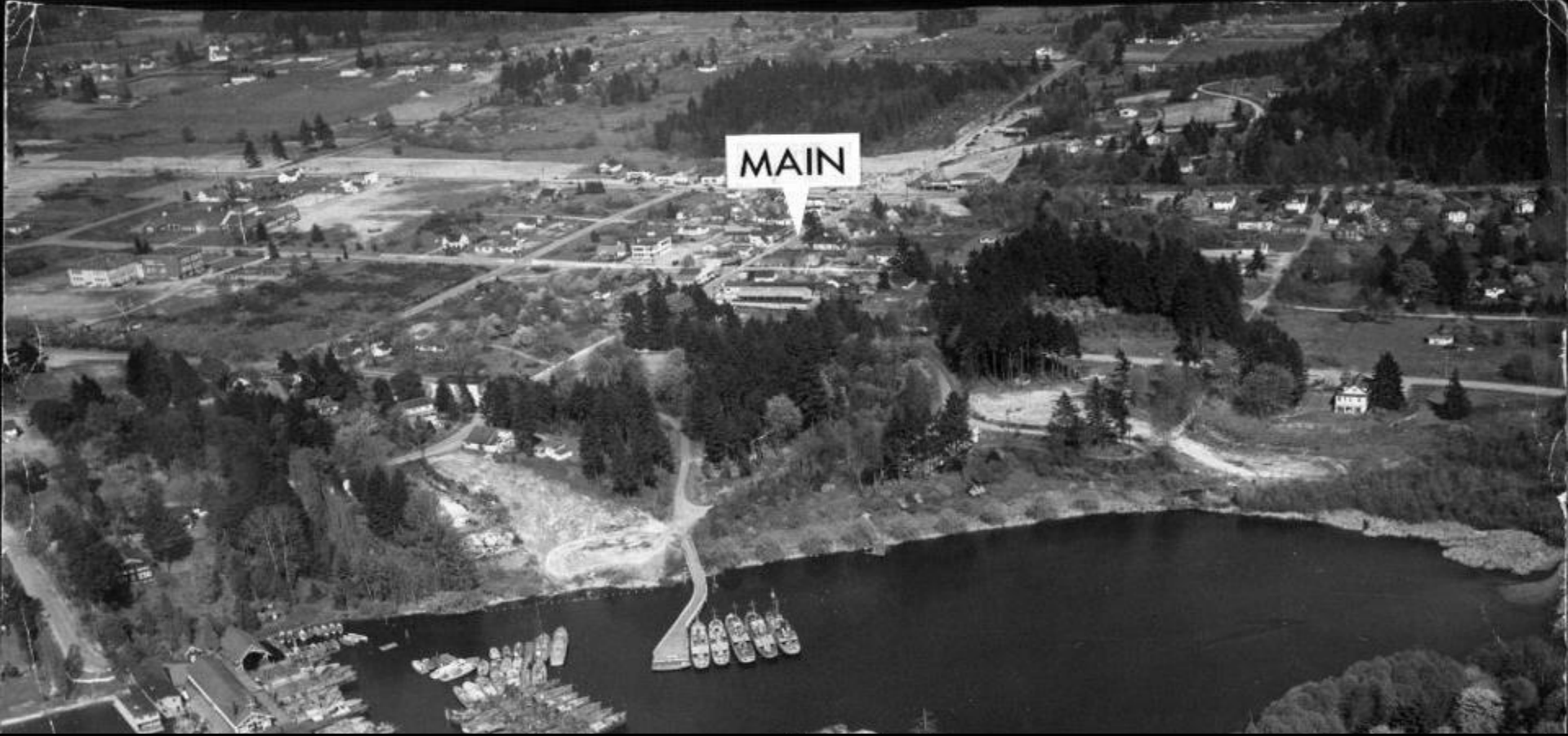


Medina 1916



Bellevue schoolhouse, 1909, which
later became the first city hall

History of Bellevue, Early 1900's



Aerial View of Downtown Bellevue/Meydenbauer Bay, viewed to the East, 1944



Built in 1956 and seen here in 1957, this was Bellevue's 'skyline', its tallest building for a number of years!

Bellevue 1960's Postcard mailed November 1963

Bellevue, 1950's



Bellevue Place/Bellevue Hyatt under construction.
Bellevue, WA March 1987.
Facing Meydenbauer Bay.



Bellevue 2019

Bellevue, 1987 to Today

Vision and Current State of the Lake to Lake Trail



Nature Trails

Ardmore Trails

Coal Creek Natural Area

Downtown Park Trails

Eastgate Park Trail

Kelsey Creek Park Nature Trails

Lake Hills Greenbelt Trails

▶ [Lake to Lake Trail and Greenway](#)

Lakemont Park Trails

Lewis Creek Park Trails

Mercer Slough Nature Park Trails

Newcastle Beach Park Nature Loop Trail

Phantom Lake Loop

Robinswood Park Trails

South Bellevue Greenway

Spiritridge Trail

Tam O'Shanter Park Trail

Viewpoint Park Trails

Weowna Park Trail

Wilburton Hill Park Trail

Woodridge Open Space

Lake to Lake Trail and Greenway

Like pearls on a necklace, Bellevue's Lake to Lake Greenway Trail captures the very essence of Bellevue's vision of a "City in a Park." The trail connects Lake Sammamish to Lake Washington and is accessible from many parks. A hike along the trail will delight visitors and deepen their sense of appreciation for the city's park and open space system. Meandering through boggy wetlands, towering forests, and historic farms, the trail explores over 800 acres of parkland. While hiking the trail you might spot great blue herons in Mercer Slough, salmon in Kelsey Creek, or possibly deer in Weowna Park.

Exploring the Lake to Lake Trail can be done all at once or in segments. Between parks, the trail follows sidewalks and asphalt pathways. The route is marked by blue City of Bellevue directional bollards. Enjoy exploring the trail and all it offers!

The Lake to Lake Trail connects nine parks across Bellevue. Walking **east to west**, the trail starts at Weowna Park next to Lake Sammamish. From Weowna Park, the trail heads to the Lake Hills Greenbelt via SE 24th St or SE 16th St. After meandering through the Lake Hills Greenbelt, the trail leads to Main St. and 140th Ave SE towards Kelsey Creek Park. Then it's a short walk over to Wilburton Hill Park and the Bellevue Botanical Garden. At Wilburton Hill Park there are two options to continue on the Lake to Lake Trail. Heading west on Main St., the trail visits Downtown Park and terminates at Meydenbauer Beach Park on Lake Washington. Or by heading south on 116th Ave SE from Wilburton Hill Park, the trail explores Mercer Slough Nature Park and terminates at Enatai Beach Park. (Of course, you could always walk west to east on the trail too).

- 10 miles (estimated)
- [Detailed map of the Lake to Lake Greenway Trail](#)
- [Trail Guide information page](#)

Suggested Trailheads:

- **Winters House Visitor Center**
in Mercer Slough Nature Park, 2102 Bellevue Way SE
- **Wilburton Hill Park & Bellevue Botanical Garden**
12001 Main St
- **Lake Hills Greenbelt**
15500 SE 16th St

Vision from Website

Trail Details

- The trail connects parks “like pearls on a necklace”
- “City in a Park”
- “Boggy wetlands, towering forests, and historic farms”
- Inclusion of wildlife

Trail Logistics

- Entrances mentioned are all east of our section
- Explanation of trail route is east to west, briefly mentions our study area

Vision from City of Bellevue Staff

Inspiration

Frederick Law Olmsted:
“Neo-Olmsted” system

Function

A non-motorized,
multi-purpose trail
system.

Aesthetics

The trail acts as a string
connecting community gems
(parks) together like the “pearls
on a string”.

Emphasis

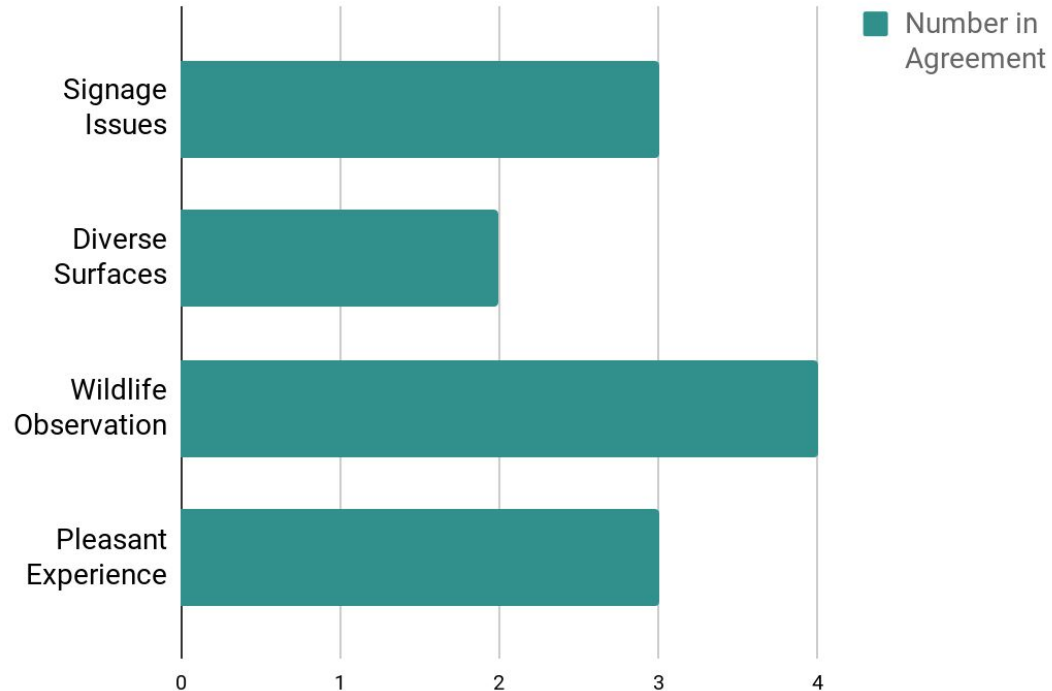
Progressive environmental
conservation efforts to
protect Bellevue’s forests,
stream and wetlands.

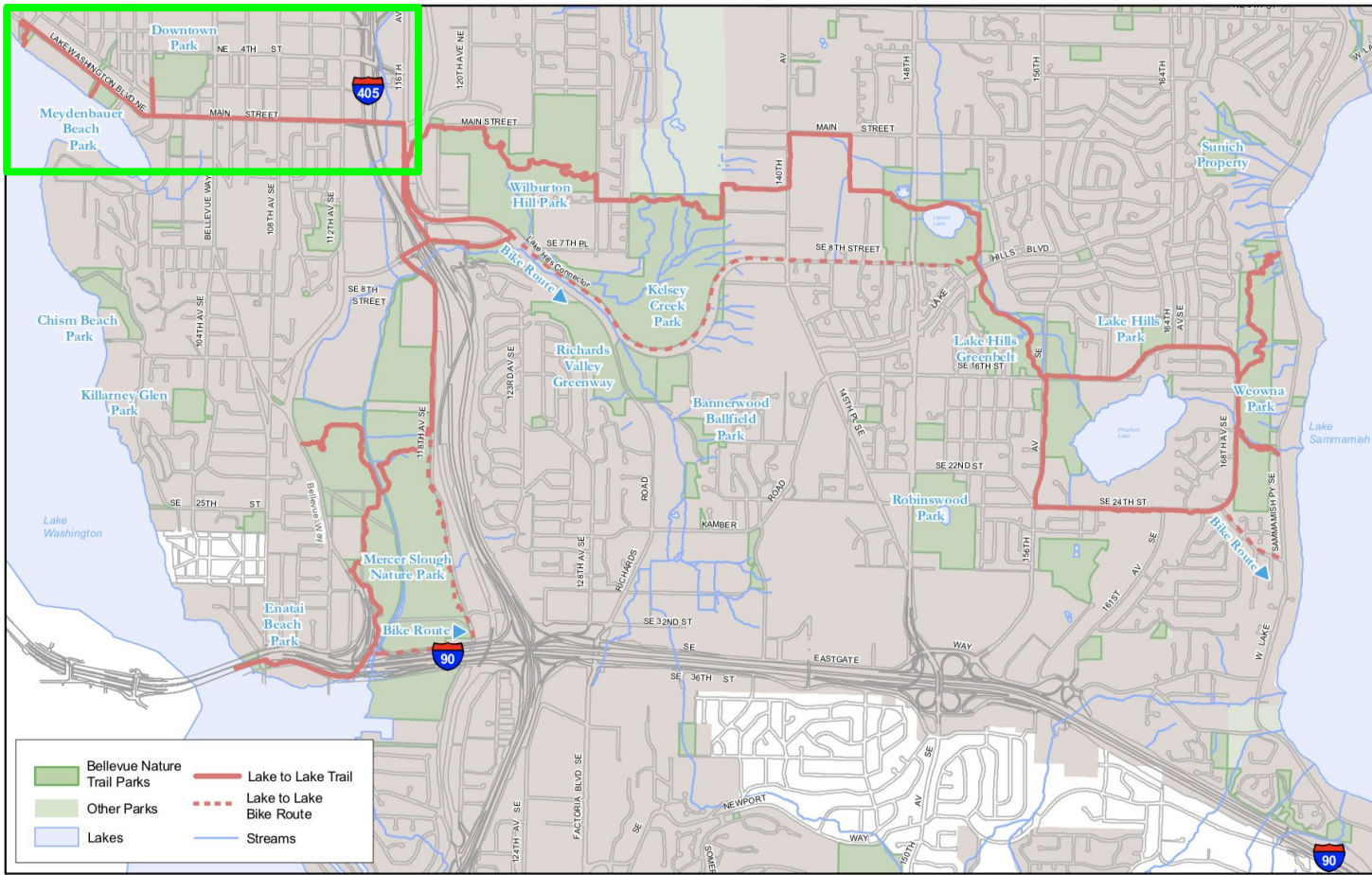
Winter Quarter

The next CEP 498 cohort will be
coordinating with Betsy to
meet and establish strong
relationships with key
departments to collect more
data.

Vision from the Community:

Reviews of L2L Trail - (6 total)





Trail Network



Current L2L Trail - Segment Start



Current L2L Sidewalk Conditions





Current Signage on L2L

Current L2L Signage (continued)



Case Studies of Notable Trails

Selected Case Studies

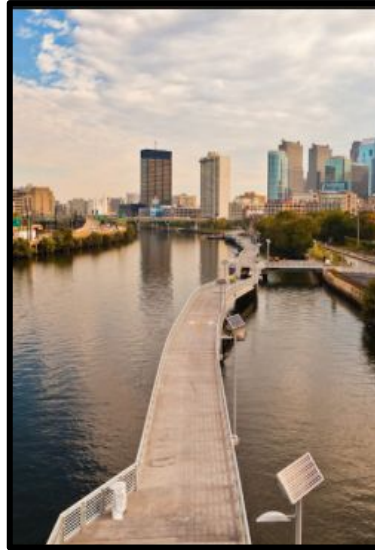
MKT Trail
Columbia, MO



High Line
New York, NY



Schuylkill River Trail
Philadelphia, PA



The Bloomingdale Trail
Chicago, IL



Atlanta Beltline
Atlanta, GA



Case Study Summary

LEGEND:

YES



NO



	Uses	Website w/ Map	Art Elements	Landscaping	Accessibility
MKT	Recreation				
Highline	Recreation				
Schuylkill River Trail	Recreation/ Commute				
Bloomingdale Trail	Recreation				
Atlanta Beltline	Recreation/ Commute				

Demographics



Demographic Analysis of Bellevue

Population: 139,014

Median age: 38.2

Median household income: \$105,402

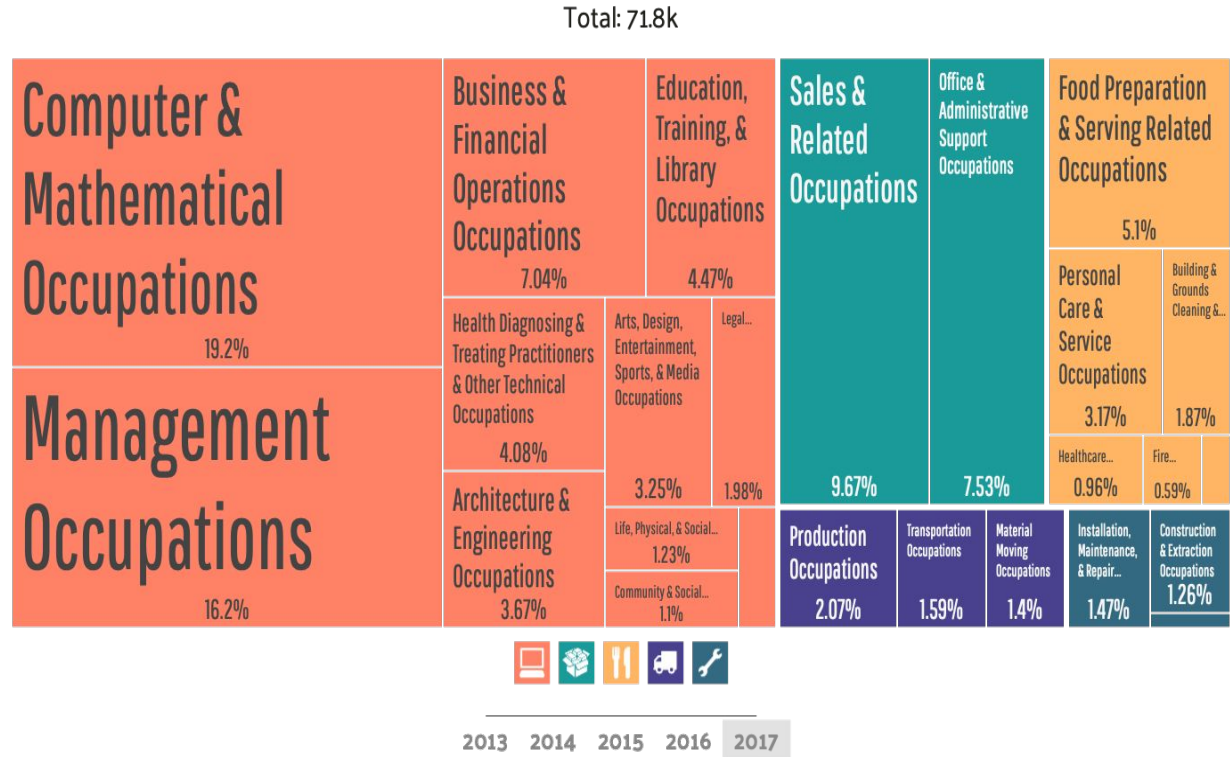
Poverty rate: 7.37%

Number of employees: 71,799

Median property value: \$665,700

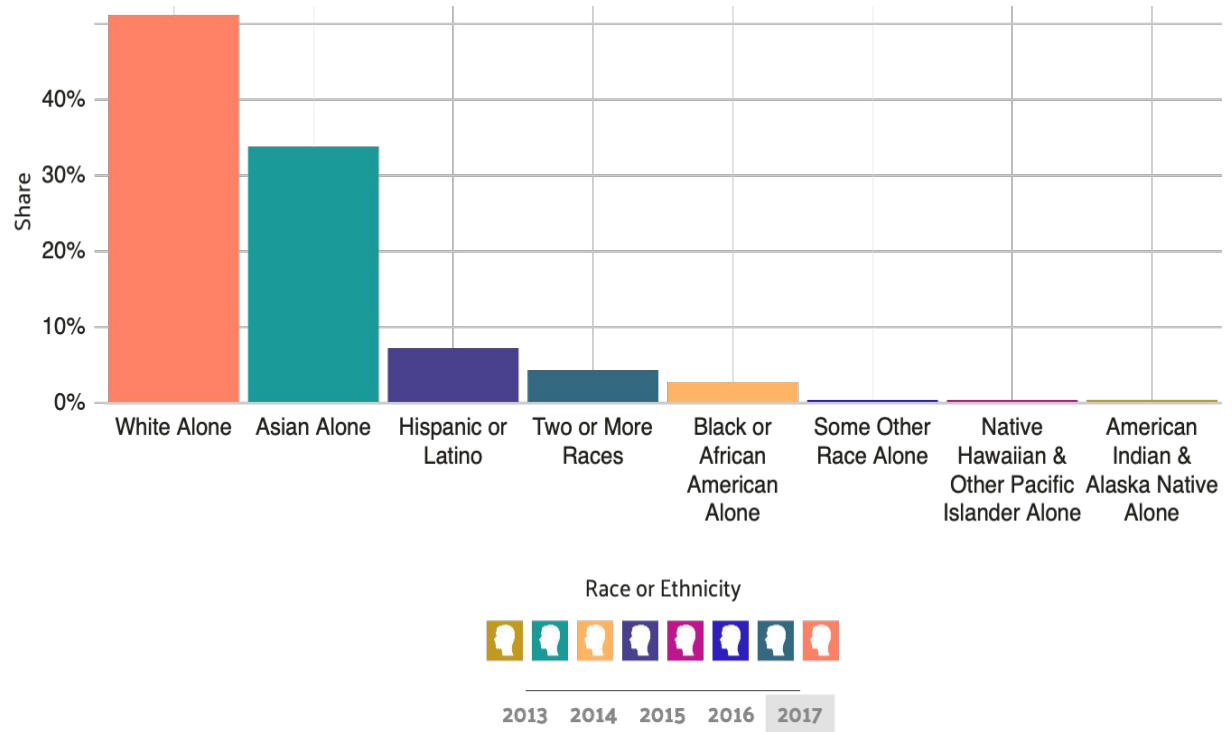
Employment in Bellevue

- The majority of employment in Bellevue is related to tech companies – total 44,670 people.
- This is something to explore for trail usage and integrate into programming.



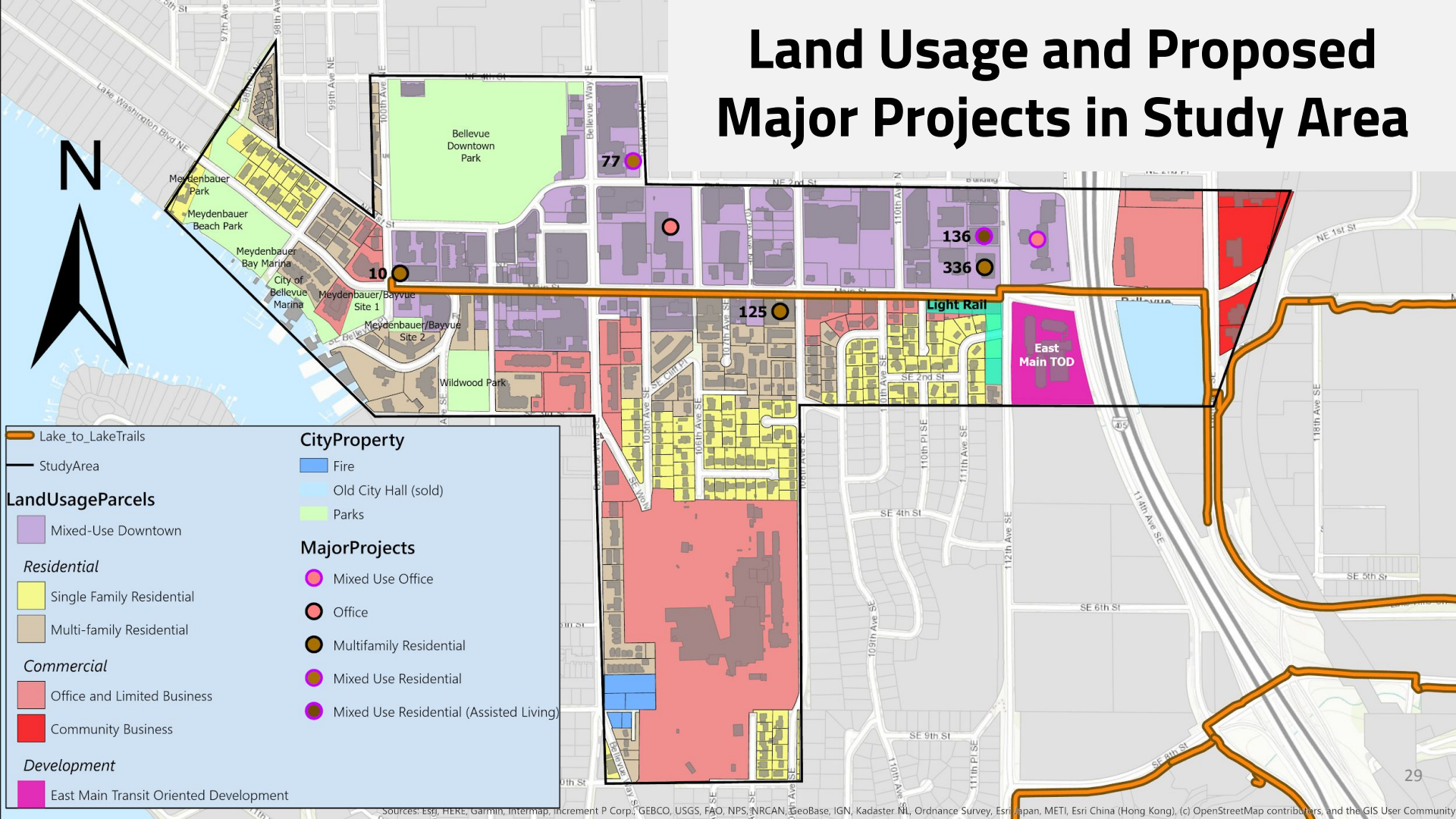
Diversity in Bellevue

- The City of Bellevue is extremely diverse in terms of race and ethnicity.
- Similar to occupation, diversity is important to integrate into wayfinding, aesthetics, and programming.



Trail Usage

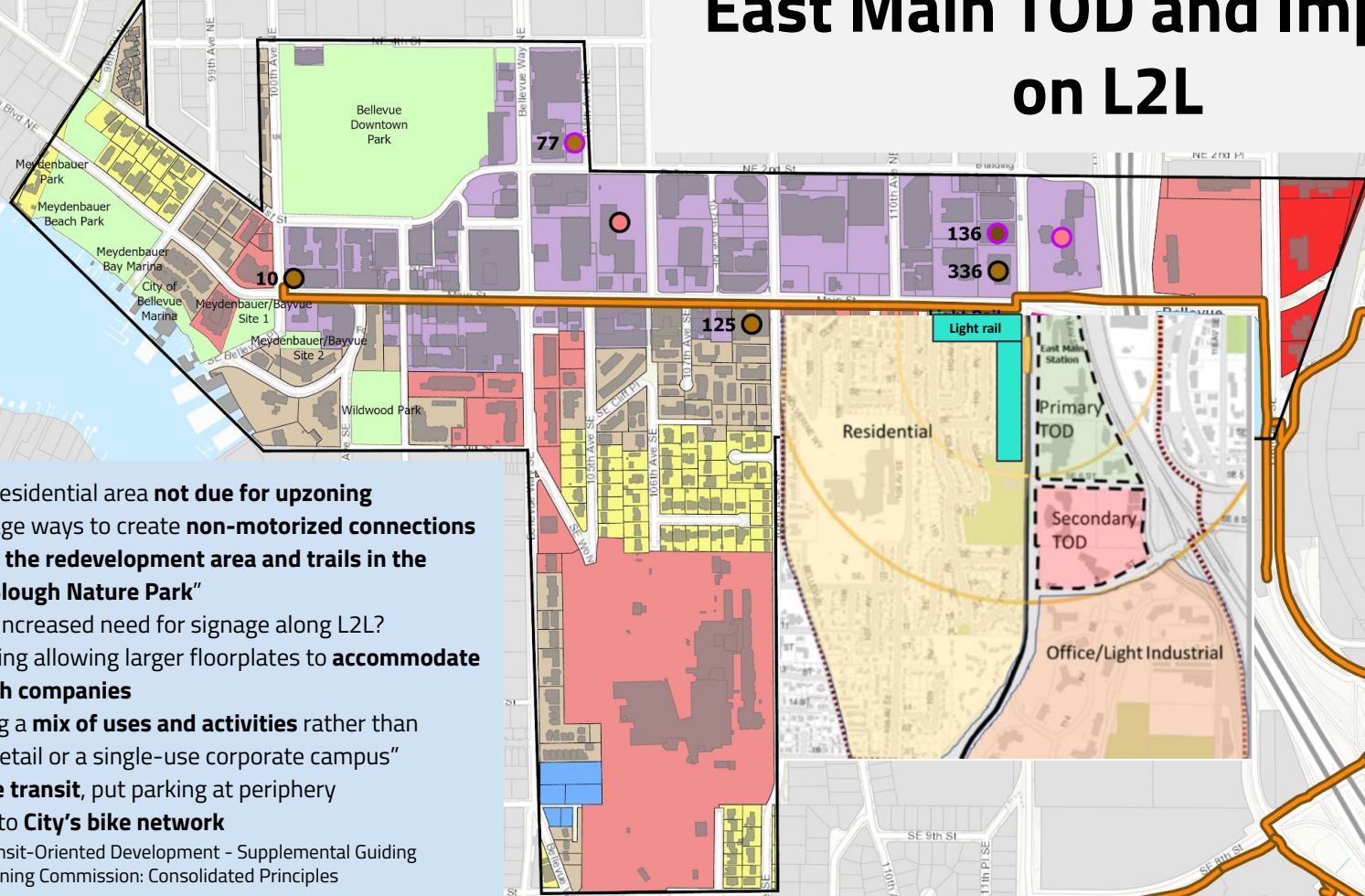
Land Usage and Proposed Major Projects in Study Area



Lake_to_LakeTrails	CityProperty
StudyArea	Fire
LandUsageParcels	Old City Hall (sold)
Mixed-Use Downtown	Parks
Residential	MajorProjects
Single Family Residential	Mixed Use Office
Multi-family Residential	Office
Commercial	Multifamily Residential
Office and Limited Business	Mixed Use Residential
Community Business	Mixed Use Residential (Assisted Living)
Development	
East Main Transit Oriented Development	

Sources: Esri, HERE, Garmin, Intermap, Increment P Corp., GEBCO, USGS, FAO, NPS, NRCAN, GeoBase, IGN, Kadaster NL, Ordnance Survey, Esri Japan, METI, Esri China (Hong Kong), (c) OpenStreetMap contributors, and the GIS User Community

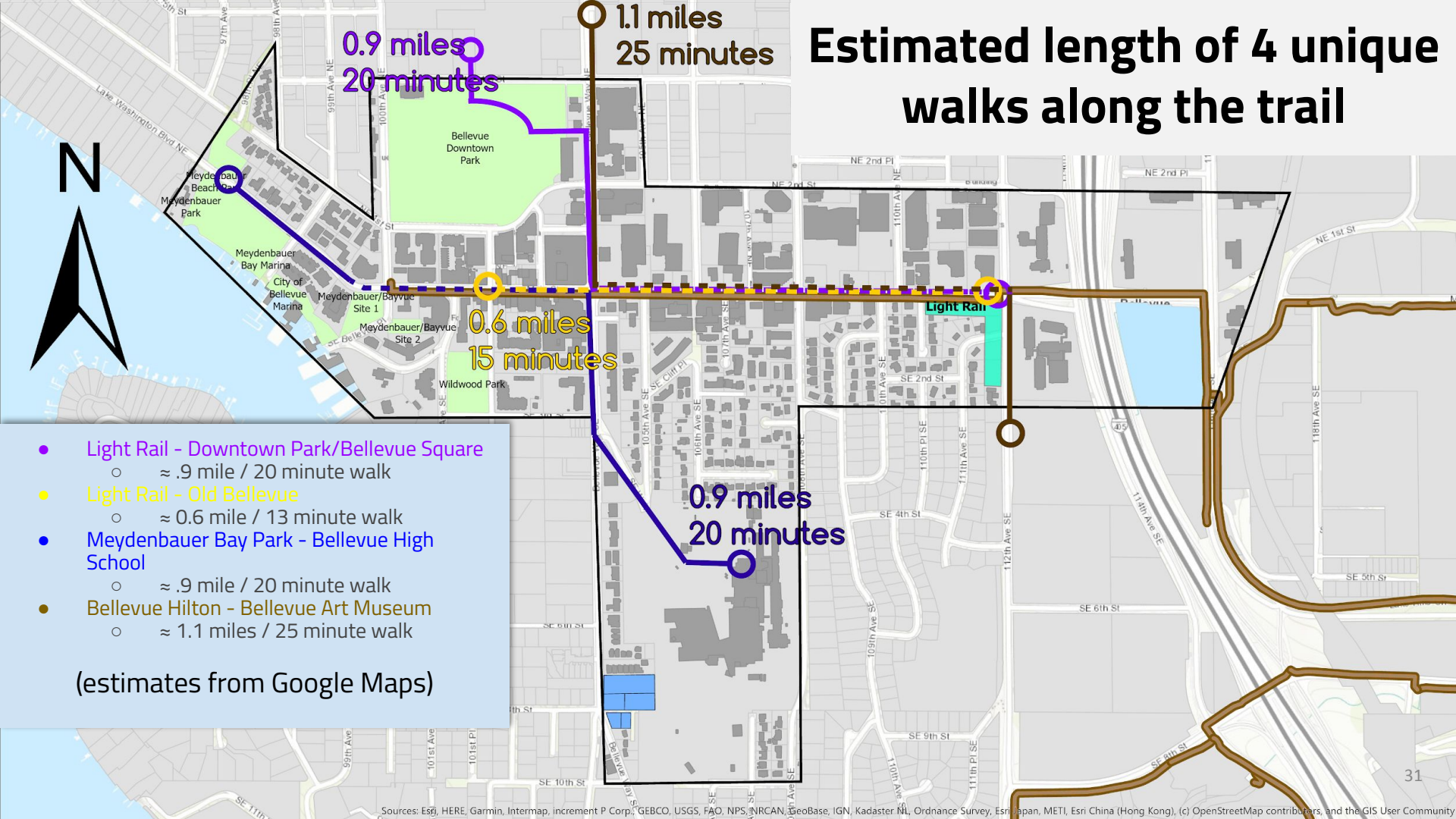
East Main TOD and Impacts on L2L



- Marked residential area **not due for upzoning**
- “Encourage ways to create **non-motorized connections between the redevelopment area and trails in the Mercer Slough Nature Park**”
 - Increased need for signage along L2L?
- Considering allowing larger floorplates to **accommodate large tech companies**
- “Including a **mix of uses and activities** rather than big-box retail or a single-use corporate campus”
- **Prioritize transit**, put parking at periphery
- Connect to **City’s bike network**

Source: East Main Transit-Oriented Development - Supplemental Guiding Principles for the Planning Commission: Consolidated Principles

Estimated length of 4 unique walks along the trail



- Light Rail - Downtown Park/Bellevue Square
 - ≈ .9 mile / 20 minute walk
- Light Rail - Old Bellevue
 - ≈ 0.6 mile / 13 minute walk
- Meydenbauer Bay Park - Bellevue High School
 - ≈ .9 mile / 20 minute walk
- Bellevue Hilton - Bellevue Art Museum
 - ≈ 1.1 miles / 25 minute walk

(estimates from Google Maps)

Contrasting Physical Constraints Between Trails

Current trail in Old Bellevue



- For majority of segment, thin sidewalks
- Curb bulb outs
- Main Street averages 15,000-16,000 daily commuters (see appendix)

Atlanta Beltline - Georgia



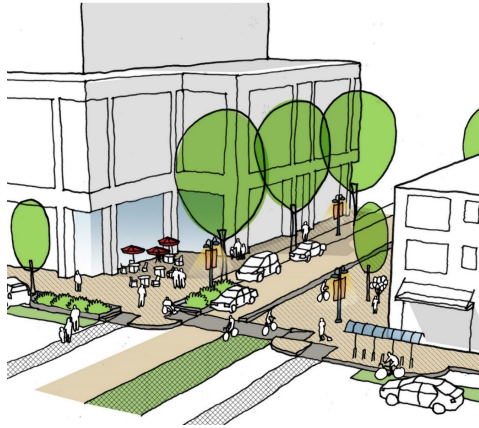
- Victim of own success
- Competing uses

Bike lane - Roosevelt Way, Seattle



- Good example of multi-use road
- One way street

THE GREEN LOOP DESIGN PRINCIPLES



Physical Separation



Walking, Jogging, Biking



Connected Canopy



Branding / Identity



Creative Furnishing Design



Building Orientation



Green Loop - Portland, OR

- Similar urban/suburban/rural trail
- Early in design process
- Redesigning streets and building pedestrian bridges

Pedestrian Oriented Design: Seattle's University District



NE 43rd St (current day)



SDOT Proposal



UDistrict Mobility Proposal

The Project

- Massive development due to light rail opening in 2021 (left)
- 24,000 daily commuters projected to walk to and from light rail station (from [UDistrict Mobility](#))
- Different groups favor different plans - public backs pedestrian priority (right)

Common elements of success in pedestrian malls

- Modest size (a few blocks)
- Tourist destination
- Density with mix of uses that bring in heavy foot traffic
- Incorporates transit
- Previous success with community events, such as farmer's markets

Pedestrian Oriented Design: Physical Properties

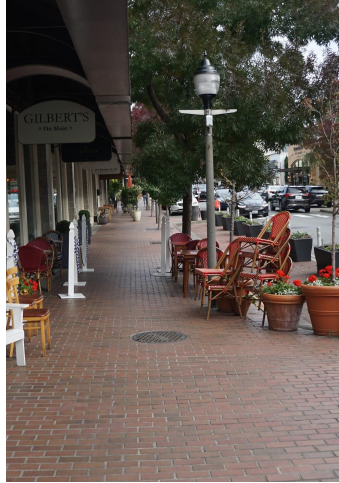
- **Lighting** and high visibility at all times of day - **increases safety** and makes people **feel welcome**
- Improved crossings
 - Visibility
 - Refuge islands
 - Increased crossing times
 - Pedestrian crossing begins before car light changes (from [KUOW News](#))
 - **Pedestrian Scramble** / Diagonal Crossing
 - Curb extensions / bulb-outs like in Old Bellevue
- Specific areas for **passenger loading/unloading** (from East-Main TOD Consolidated Principles)
- **Reduce speed limits** (Neighborhood Safe Streets bill allows for reductions to **20 MPH**)
 - Current speed limit along Main Street in study area is 30 MPH (from [Bellevue Municipal Codes](#))



A Pedestrian Scramble at UW (15th Ave and NE 40th St)

Wayfinding and Aesthetics

Current Lake to Lake Trail Wayfinding



Lack of uniform signage
within our study area



Nothing to indicate that
users are still on the trail

Wayfinding - Logo



IMPORTANCE



CASE STUDIES



RECOMMENDATIONS



Importance of Logos

Logos Effect on Public Trail



Cross platforms



Reveals an Identity



Visual and Memorable



Separation from distractions



Overall recognition

The Highline, New York, NY

- Simple Logo
- Gives Trail an identity
- Creation of marketable products
- Recognizable





The Nicollet Mall, Minneapolis, MN

● Background Info

- Main street of downtown Minneapolis.
- Cultural and Commercial center
- Underwent major renovation
- Comprehensive signage and wayfinding

Minnesota

MN



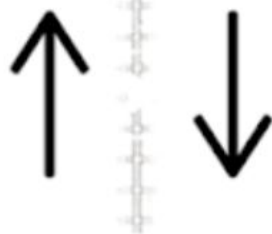
N



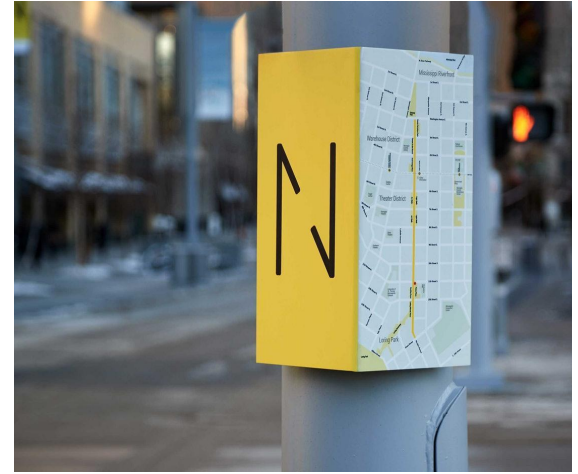
Nicollet Mall

NM

The Nicollet
Mall,
Minneapolis,
MN



Logo



The Nicollet Mall, Minneapolis, MN

Design Principles for Logo Creation



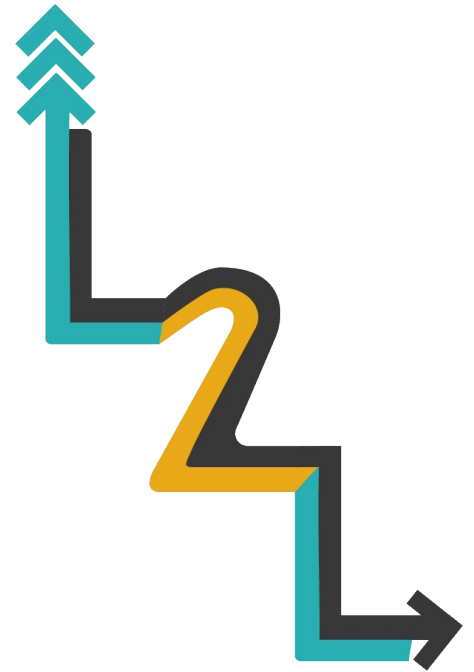
Lettermark
logo



Multipurpose Logo



Simplicity



Concept Ideas

Logo Impact

When implemented properly, logos can have a positive effect on public trails

Highline trail in NY and Nicollet Mall in Minneapolis have successfully implemented a logo

The ability for Bellevue to create and implement a logo is there

Current “Plant Palette” in Old Bellevue



Plant Palette

Perennials



Left to right: *Anemone blanda*, *Camellia japonica*, *Camellia sasanqua*, *cerastium tomentosum*, *Thymus serpyllum*, *Matteuccia struthiopteris*, *polystichum setiferum*, *Polystichum polyblepharum*, *Helleborus x hybridus*, and *Hydrangea paniculata*

Shrubs



Left to right: *Choisya ternata*, *Aesculus parviflora*, and *Deutzia gracilis*

Grasses



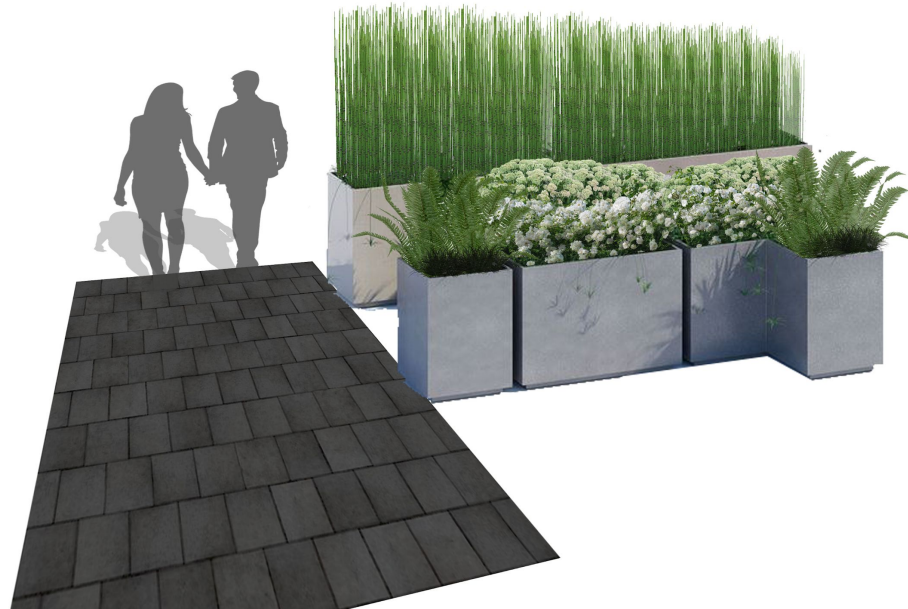
Left to right: *Equisetum*, *Ophiopogon planiscapus*, and *Hakonechloa*

Trees



Left to right: *Acer palmatum 'Ukigumo'*

Planting Design Rendering



Programming

Programming

“Research shows that recreation programs in parks can change the way that people interact with their environment.” -NRPA



Importance of Programming

- Promotes a sense of place
- Fosters relationships
- Promotes community, stewardship, and engagement
- Allows for exploration and education for all ages



Precedents in Programming

- Current Examples within the City of Bellevue:
 - Lake to Lake Bike Ride (annual event)
 - 'Connections' brochure
 - 'Nocturnal in November (owl watching at Mercer Slough)
 - TRACKS (teaching, recreation, adventure, competency, knowledge, stewardship)
 - Natural Resource Programs brochure



Implementation of Programming

- Collaboration with other City of Bellevue departments
- Finding partnerships with businesses, nonprofits, etc
- Streamlining the website and associated pages.
- Creation of an annual schedule and opportunities
- Public Outreach



Winter 2020

- Use our section as a “design workshop” for rest of trail
- Design comprehensive wayfinding system for our section
 - Develop theme
 - Propose concepts for signage and direct, physical wayfinding
- Compile and create different designs for details (e.g., seating, lighting)
- Research and recommend trail materials
- Create multiple concept drawings of our section, tying designs together into a unified vision

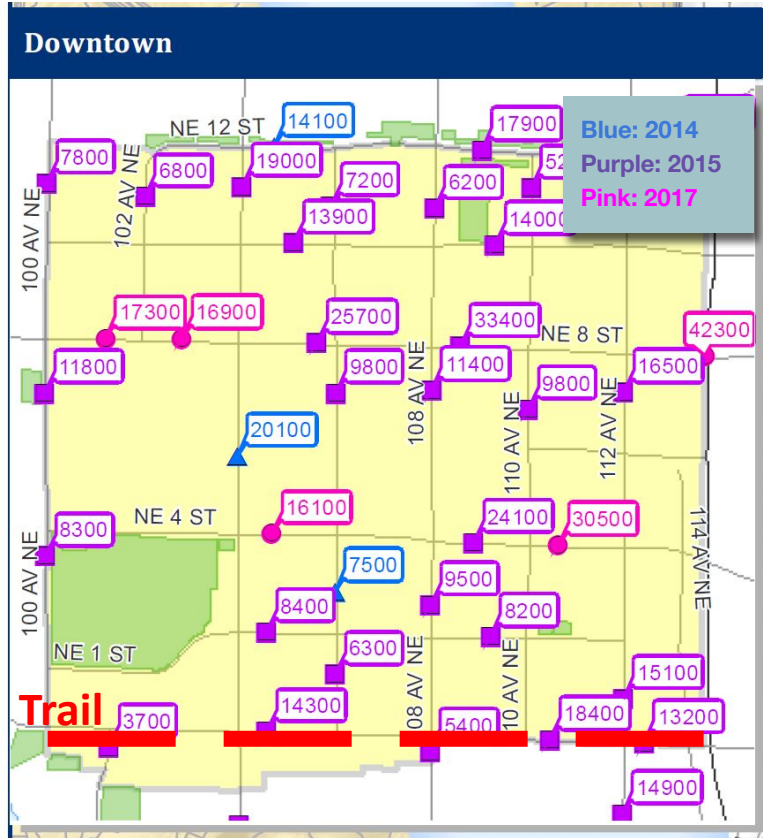
Spring 2020

- Expand work to larger parts of the trail
- Research how our design intersects and interacts with all modes of transportation
- Provide examples of how theme could apply to different parts of the trail
- Investigate social issues surrounding trail (e.g., racial equity, possible gentrification issues)
- Integrate into larger parks/trail networks in Bellevue

Sources

- Historic images of Bellevue
 - <https://www.linkedin.com/pulse/look-back-history-bellevue-1900-1980s-photo-gallery-tim-savy/>
- Balk, Gene. 2019. "Seattle Sees Nation's Biggest Drop in Solo Car Commuters as Transit, Walking Surge." *Seattle Times*, November 21, 2019. <https://www.seattletimes.com/seattle-news/data/seattle-sees-nations-biggest-drop-in-solo-car-commuters-as-transit-walking-surge/>.
- "East Main Transit-Oriented Development - Supplemental Guiding Principles for the Planning Commission." 2019. City of Bellevue. <https://bellevue.legistar.com/LegislationDetail.aspx?ID=4054768&GUID=6E0EBD73-2C88-4B2A-B5B3-913AC1890E46>.
- Atlanta Beltline Image: https://www.artsatl.org/wp-content/uploads/12303933_10153316530850983_9138341514994038931_o-759x500.jpg
- Bicknell, Natalie. 2019. "A Small Step Forward for the U District Mobility Plan." *The Urbanist*. April 4, 2019. <https://www.theurbanist.org/2019/04/04/a-small-step-forward-for-the-u-district-mobility-plan/>.
- Geenen, Hugh. 2019. "Turning Ballard Avenue Into A Pedestrian Mall." *The Urbanist*. February 12, 2019. <https://www.theurbanist.org/2019/02/12/turning-ballard-avenue-into-a-pedestrian-mall/>.
- "Survey on NE 43rd Street." 2019. U District Mobility. September 2019. <https://www.udistrictmobility.com/43rd-survey.html>.
- *Bellevue City Code - Title 11, Vehicles and Traffic - Ch. 11.32 Speed*. Accessed November 24, 2019. <https://bellevue.municipal.codes/BCC/11.32>.
- "Pedestrian Oriented Design." Puget Sound Regional Council. Accessed November 24, 2019. https://www.psrc.org/sites/default/files/pedestrian_oriented_design.pdf.
- Banwell, Katherine. 2019. *Crossing Seattle Streets Is Getting Safer*. KUOW News. Seattle. <https://www.kuow.org/stories/crossing-the-street-is-getting-safer>.
- <https://www.nrpa.org/our-work/Three-Pillars/health-wellness/ParksandHealth/fact-sheets/park-programming-better-health/>

Appendix - Average Daily Traffic in Study Area



The Lake to Lake trail's status as a commuting corridor: comparing Downtown traffic

- Main Street - averages 15,300 in 2015
 - My 2017 estimate: 15,600 (based on Seattle's average increase of 1% per year of rides, from [Seattle Times](#))
 - From 2010 to 2018, the percentage of Seattle commutes done alone via car went from 53% to 44%. In Bellevue, it went from 61% to 53%.
- NE 4th Street - averages 23,300 in 2017
- NE 8th Street - averages 25,500 in 2017
- 108 Avenue NE - averages 8,125 in 2017
- Bellevue Way SE entering Downtown area from South- averages 26,100 in 2015, making it within the top 5 busiest intersections in Downtown and top 10 or so within the city

Image/Data from City of Bellevue -
[http://apps.bellevuewa.gov/gisdownload/
PDF/Transportation/AAWT_11x17.pdf](http://apps.bellevuewa.gov/gisdownload/PDF/Transportation/AAWT_11x17.pdf)